



LOUGHRIES

INTEGRATED PRIMARY SCHOOL

Prospectus



Learn, Integrate, Participate, Succeed.



LOUGHRIES

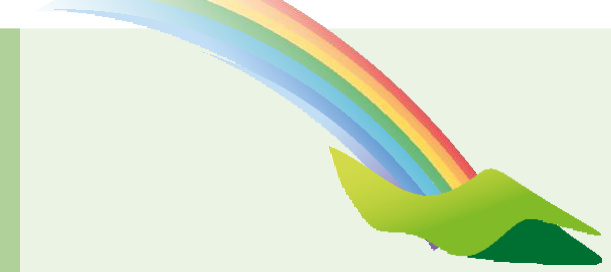
INTEGRATED PRIMARY SCHOOL

Learn Integrate

Participate Succeed

Contents

Welcome	5
Introduction and History of Loughries	6
Mission Statement and School Aims	6-7
Integrated Ethos	8
The Curriculum	9-12
Keeping you informed	13
Pastoral Care	14-15
Homework	16
Beyond the Classroom	17
General Information	18
Admissions Criteria	19



Welcome to Loughries Integrated Primary School. This Prospectus is designed to give you an insight into what happens at our school and to help you in making one of the most significant decisions in your child's life. Visitors to our school often comment that Loughries feels different, perhaps because we have a strong sense of community and all the Staff and children know each other across all year groups.

As an integrated school we provide a welcoming, supportive learning environment where all traditions, cultures and abilities are respected and nurtured together. We respect the uniqueness of every child and have high expectations in all areas of their development: - academically, physically, socially, emotionally and spiritually. We deliver a broad and balanced curriculum for all children and aim to help each child achieve their full potential. The Governors, Staff and Parents work in partnership to ensure that pupils receive a high quality education. Through working together we can support and empower our children to prepare them for a shared future. We invite you to make an appointment to visit the school, so that you may judge for yourself.



Introduction and History of Loughries

Loughries Integrated Primary School enjoys a pleasant rural setting just 3 miles from Newtownards, close to the shores of Strangford Lough. The school was established in 1842 and continues to be highly regarded as a provider of quality education.

The school transformed to integrated status in September 2016 and celebrated 5 years as an integrated school in September 2021. Everyone is excited and passionate about this journey and the new opportunities this opens up for our children.



Mission Statement

Loughries Integrated Primary School fosters a nurturing environment which encourages, supports, develops and challenges each child to reach their full potential. We endeavour to equip our pupils with the skills and qualities needed to work together for a shared future.

Aims for our school

We believe that each child will succeed through:

- A warm, caring and stimulating environment
- A culture of support, rapport, challenge and encouragement
- A rich, varied, up-to-date range of learning resources
- A broad, balanced and challenging curriculum
- Innovative teaching and investigative approaches to learning
- An enriching programme of extra-curricular activities and visits
- Effective learning partnerships between school, home and the community

We demonstrate our commitment through:

- Continually evaluating and improving all that we do
- Effectively monitoring standards of provision
- Collaborating towards common goals

Aims for our children

We aim for our children to:

- Have high self-esteem, based on self-respect, respect for others and their environment
- Acquire attitudes of acceptance, tolerance, equality, honesty and trust
- Take responsibility for their own behaviour and actions
- Achieve their best across all areas of the curriculum
- Develop a range of communication, practical, technological and life skills
- Work independently, creatively and collaboratively
- Become confident, well-motivated and inquisitive life-long learners
- Enjoy their time at Loughries Integrated Primary School and create happy memories.



Integrated Ethos

As an integrated primary school we provide a learning environment where children from Catholic and Protestant backgrounds, as well as those of other faiths and none, can learn with, from and about each other. Our school is committed to the principles of Integrated Education through Equality, Faith & Values, Parental Involvement and Social Responsibility as outlined by the Northern Ireland Council for Integrated Education.



“We are all unique like fingerprints.”

The Northern Ireland Curriculum

At Loughries we endeavour to provide a broad and balanced curriculum appropriate to the individual needs of each child, enabling them to take advantage of every learning opportunity, to experience success and to reach his or her full potential.

Language and Literacy

Literacy focuses on developing each child's ability to understand and use language as an integral part of learning. This enables children to interact effectively with the world around them, to express themselves creatively and communicate confidently through talking, listening, reading and writing. Language and Literacy are fundamental prerequisites for thinking, learning and interacting in personal, social and work contexts throughout life. Literacy is therefore a key to learning as well as a key to enjoyment and personal growth.

Mathematics and Numeracy

Numeracy is the development and application of mathematical concepts across the curriculum and in real life situations. Skills in Numeracy should help children to make informed and responsible choices and decisions throughout their lives. Mental Mathematics is an important part of Mathematics and is highly valued at Loughries as it promotes quick and independent thinking. Our children have successfully demonstrated their skills in the Sumdog competition each year. We encourage a love of Numeracy through practical and problem solving activities related to real life situations.



The Northern Ireland Curriculum

The Arts

This area of learning includes Art and Design, Drama and Music. It provides rich opportunities for developing creativity, allowing all of our children to express their ideas, feelings and interpretations of the world through pictures, sound, drama and dance. The P1-P4 children enjoy participating in the Nativity each year. The P5-P7 children have the opportunity to develop their talents through a School Production. The Music Service attend our school and teach our children to play brass and woodwind instruments.

The World Around Us

The children are provided with opportunities to explore and develop their curiosity about the world around them within the areas of Geography, History, Science and Technology, through a thematic, cross-curricular approach and practical activities. Learning is further enriched through class trips.

Personal Development and Mutual Understanding

This area focuses on encouraging each child to become personally, emotionally and socially effective, to lead healthy, safe and fulfilled lives and to become confident, independent and responsible citizens, making informed and responsible choices and decisions throughout their lives. We value the opportunities provided to our children by outside agencies.



Physical Education

Throughout our PE curriculum, we aim to provide opportunities for our children to develop a range of physical skills and consolidate the full range of fundamental movement skills as well as understanding the benefits of a healthy lifestyle. The P5-P7 children attend Ards Blair Mayne Wellbeing and Leisure Complex and benefit from experienced coaches to develop their skills in swimming.

Daily Mile

Everyday all children participate in the daily mile to improve their physical, social, emotional and mental health and wellbeing. The children run or jog around our playground for 15 minutes.

I.C.T

Acquiring ICT skills has become increasingly important and is incorporated across all areas of learning. The use of ICT provides our children with the skills to handle and communicate information, solve problems, pose questions and be creative. Each class has an interactive whiteboard. We have a computer room with computers, laptops and ipads and Beebots.

Religious Education

At Loughries our RE programme is based upon the core syllabus for Northern Ireland. Our ethos is Christian and non-denominational. Pupils will be introduced to the ideas, beliefs and practices of the major world religions, in a manner appropriate to their age and ability, and in line with the NI Curriculum. Parents may withdraw their child from RE by writing to the school.

We come together as a school community each week and on special occasions to celebrate similarities and differences. Each class has the opportunity to lead Assemblies at different times of the year. The school encourages religious and community leaders to visit and participate in school activities.





Keeping you informed

Welcome meetings are held for each class at the start of the school year. Parents are encouraged to play an active part in their child's education by meeting with teachers during scheduled consultations in October and February. Parents will receive a detailed written report in June informing them of their child's progress.

Assessment plays an integral part in the learning and teaching process. It provides opportunities to inform children, parents and teachers about individual progress and development needs.

We use diagnostic assessment so we can provide extra support for children with particular difficulties. Provision may be made in a number of ways including individual and small group learning with Special Educational Needs staff. When necessary the school works in partnership with outside agencies to ensure the most appropriate support is provided for individual children.

Children identified as gifted and talented are challenged further within their classroom with extension activities.



Pastoral Care

At Loughries Integrated Primary School we aim to provide children with a warm, caring and stimulating environment where children feel safe, happy, valued and are encouraged to fulfil their potential. This is fostered in several ways, including:

Positive Behaviour

We adopt a positive approach to discipline. Teachers enjoy good relationships with pupils, and the Star of the Week award reinforces our expectations and encourages children to give of their best at all times, both in terms of effort and respect. The children are all encouraged to behave well and if things go wrong then we have procedures for dealing with incidents. We have a whole school contract and each classroom has its own classroom rules and reward systems.

Celebrating Achievements

During our weekly Assembly there is an opportunity to celebrate pupil achievements both within the classroom and outside school.

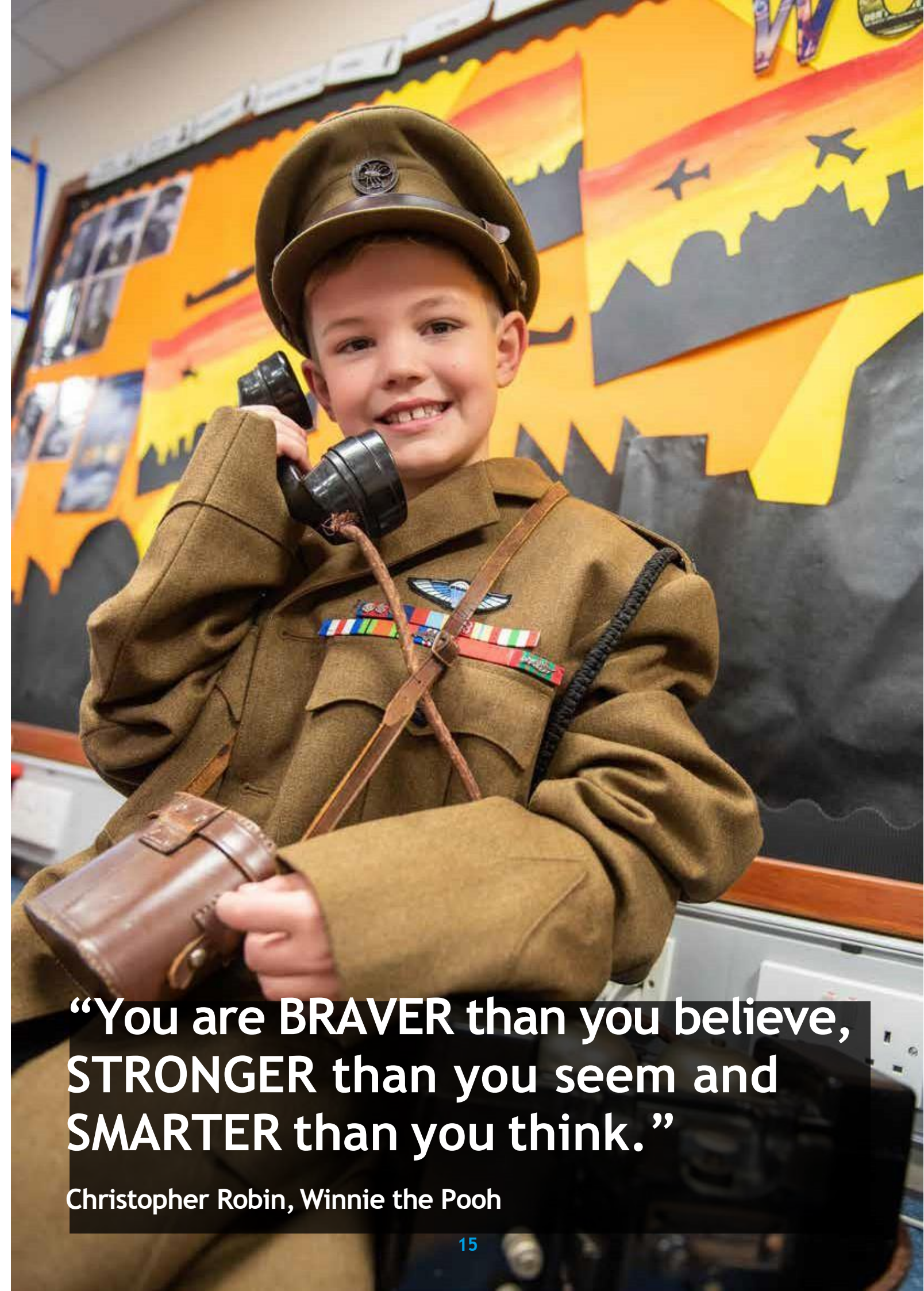
School Council

Our School Councillors are elected from Primary 5, 6 and 7. They meet with the Principal throughout the year and have the opportunity to express their views.

Buddy System

The P7 pupils are on duty each break and lunch time where they interact with our younger children and support them in their play activities.

Our detailed Pastoral Care, Positive Behaviour, Child Protection and Anti-bullying Policies are available on our school website: www.loughriesips.com.



“You are BRAVER than you believe, STRONGER than you seem and SMARTER than you think.”

Christopher Robin, Winnie the Pooh



Beyond the Classroom

Extra Activities

Our programme of activities on offer is constantly developing reflecting our school community. After school activities on offer include: Sports, Cookery, Art, Science and Computer Club.

Educational Visits

Each year all pupils experience several educational visits to places of interest. P6 and P7 have the opportunity to go on a residential trip. Recent destinations have included Ganaway, Greenhill and The Share Centre.

Parents, Teachers & Friends Association

At Loughries Integrated Primary School we very much appreciate the support of our local community. Parental support is invaluable and our committed PTFA provides the opportunity for everyone to get involved in the life of our school. Not only does the PTFA raise valuable funds to add to school resources, they also provide many opportunities to meet socially.

The Board of Governors

The Board of Governors takes a keen interest in school affairs. Governors make decisions regarding school finance, curriculum, maintenance, staffing and policies.

Charities

As a school we recognise our responsibilities to the wider community and through a variety of activities we are supportive of several outside charities each year. The P7 children are responsible for creating a charity morning each year where they design activities for the whole school to participate in and raise money for a chosen charity.



Homework

We regard homework as a very important part of the school programme. It helps reinforce what has been learnt in class, encourages independent work and gives parents insight into their child's learning.

Parents are encouraged to show interest and support their children's homework programme by asking questions, sharing reading and ensuring good presentation of written work. Finding a quiet time and place to do homework and praising good effort are important in helping children.

General information

SCHOOL UNIFORM

Girls

Grey skirt
White polo shirt with school logo
Red sweatshirt with school logo
Red/white check dress (summer option)
White/grey socks or red/grey tights
Black shoes

SCHOOL UNIFORM

Boys

Grey trousers
White polo shirt with school logo
Red sweatshirt with school logo
Grey shorts (summer option)
White/grey socks
Black shoes

P.E. Kit Pupils are encouraged to wear the white polo shirt with School Logo, plain black jogging bottoms and black or white trainers/PE plimsols. The children may attend school in their P.E. kit on P.E. days and no jewellery should be worn.

The School Day

8:15 - 8:45am Breakfast Club available
P1-P3 9:00am – 2:00pm* Mon to Fri
**During September P1 class ends at 12:30pm*

P4-P7 9:00am - 3:00pm Mon to Thur

P4 9:00am - 2:00pm Every Friday
P5-P7 9:00am - 2:10pm Every Friday



Healthy Eating

We adopt a Healthy Eating Policy for all of our children. They bring a healthy snack to school from Monday to Thursday and have the option of a treat on Friday. We encourage children to drink water throughout the day and all children have access to the water cooler.



Admissions Criteria

Loughries Integrated Primary School will admit children of compulsory school age using the current Admissions Criteria. The Board of Governors will strive to ensure the required balance of all faiths and none. Further information on the school's Admission Criteria and key dates can be found on the school website: www.loughriesips.com and the Admissions section on the Education Authority website: <https://www.eani.org.uk/parents/admissions>



LOUGHRIES

INTEGRATED PRIMARY SCHOOL

Contact us at:

**Loughries Integrated Primary School,
2 Ballyblack Road,
Newtownards,
County Down
BT23 8SR**

Telephone: 028 9181 7528

Email: info@loughriesips.newtownards.ni.sch.uk



www.loughriesips.com